



# Regional Groundwater Workshops

*Kate Williams  
January & February 2015*

CALIFORNIA  
  
**WATER**  
FOUNDATION®

*An initiative of Resources Legacy Fund*

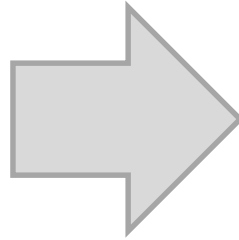
## Overview

- CWF – Who we are
- Overview of SGMA
- Steps to Forming a GSA
- Governance Models



*Advance change:*

- *Remove barriers*
- *Promote new policies & approaches*



*To make our cities, farms  
and environment,  
sustainable and resilient*



## 2014: Year of Water



Historic Drought



Governor's Water Action Plan



Historic Groundwater Legislation



Passage of Proposition 1



*Comprehensive legislation to manage groundwater to sustainable levels*

- Tools/authorities to manage groundwater
- High and Medium Priority Basins
- Formation of a GS Agency
- Preparation of GS Plan
  - Basin conditions & water budget
  - Measurable objectives & 5 yr milestones
  - Achieve sustainability in 20 years

## SGMA Overview

- Retains local government authorities
- Promotes coordination between land use plans and groundwater plans
- Counties are presumed GSA, if no other identified



*Sustainability*: Manage groundwater to prevent undesirable results (significant & unreasonable):

- Chronic lowering of groundwater levels
- Reduction of groundwater storage
- Seawater intrusion
- Degraded water quality / contaminant plume migration
- Land subsidence
- Depletions of interconnected surface water

## SGMA Overview

- Local management with state oversight
- State Role (Carrot & Stick)
  - Technical & Financial Assistance
  - Regulations
  - Review GSPs and monitor implementation
  - Intervention if locals do not act





## SGMA - Time Frame for Success

Time	Action
6/30/2017	Formation of GSAs
1/31/2020	Completion of GSPs in critically overdrafted basins
1/31/2022	Completion of GSPs in all other basins
1/31/2025	Intervention delayed 2 yrs in areas with significant impacts to surface waters
20-year implementation period	Implementation of local GSPs to achieve sustainability

## SGMA Overview -- Intervention

- If all or part of basin does not meet deadline
  - Probationary status for that portion
  - Public hearing and 180 days (6 months)
  
- After 180 days
  - Groundwater extraction reporting
  - Interim Plan developed by SWRCB
  - Additional time if impacts to surface waters



## Key Governance Features of SGMA

- Who can be a GSA
- Local determination
- GSA Exemptions:
  - Alternative for functional equivalents
  - Adjudicated basins
- Special Act Districts
- Engaging Interested Parties

## Key Governance Features of SGMA

- Final GSA notification to DWR June 30, 2017
- Public hearing and notice required prior to DWR notification
- Notice of Intent to DWR includes:
  - Boundaries
  - List of other GSAs
  - Copy of resolution or bylaws
  - List of interested parties & process of engagement
- 90 day period after notification to identify conflicts

## 6 Steps to Forming a GSA

1. Identify your basins
2. Identify and work with local agencies
3. Understand your basin and available resources
4. Identify and involve interested stakeholders
5. Evaluate SGMA authorities & who wants to do what
6. Evaluate and propose governance model



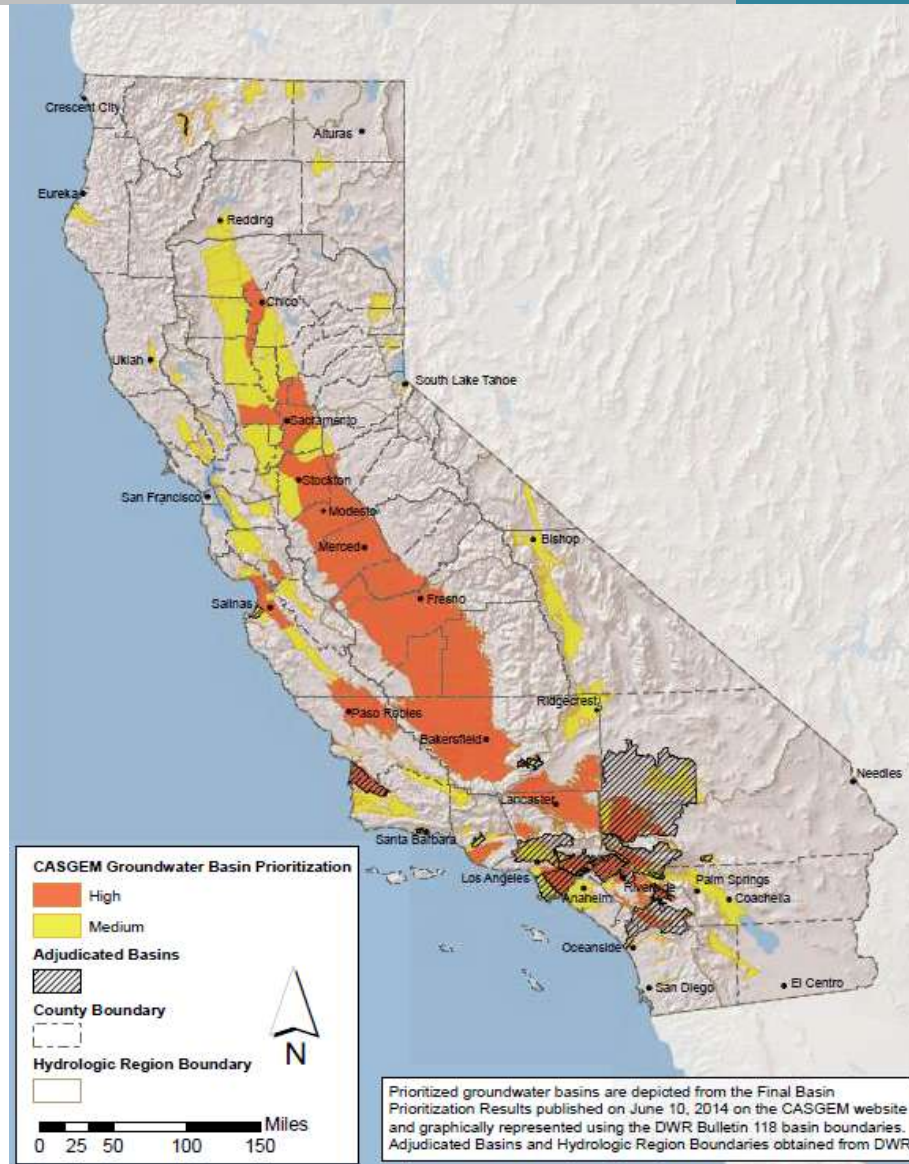
# 1. Identify the Groundwater Basins

- Identify the high & medium priority basins in your region
- Identify basins that may be exempt
- Boundary issues that limit sustainable management
- SGMA basin focus is significant shift
- DWR CASGEM information

□ [www.water.ca.gov/groundwater/casgem/prioritymap.cfm](http://www.water.ca.gov/groundwater/casgem/prioritymap.cfm)



# CASGEM Basin Prioritization



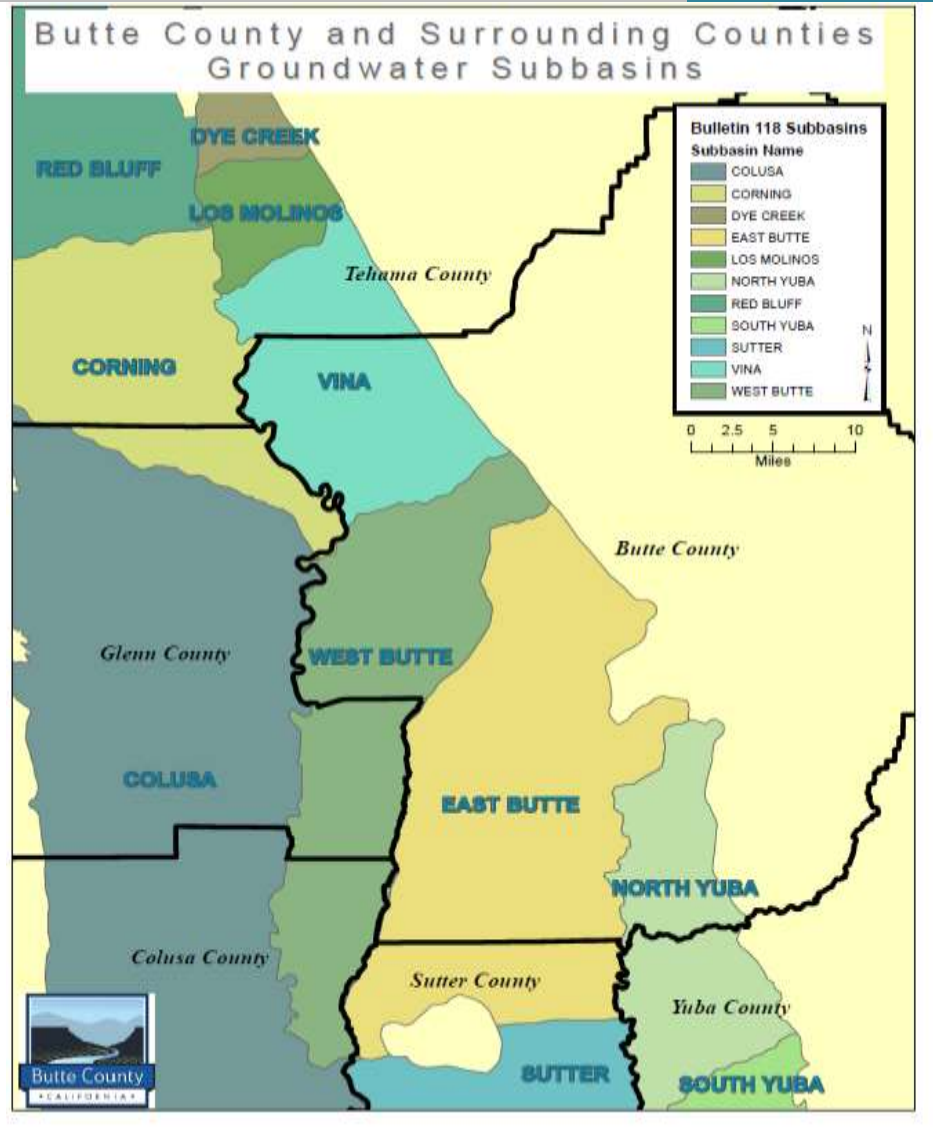
## 2. Identify & Work with Local Agencies

- Identify & map eligible local agencies
- Understand overlapping jurisdictions
- Identify County-only areas
- Understand local agency resources & knowledge
- Identify local agency interests
  - Regional water management
  - Role in GSA

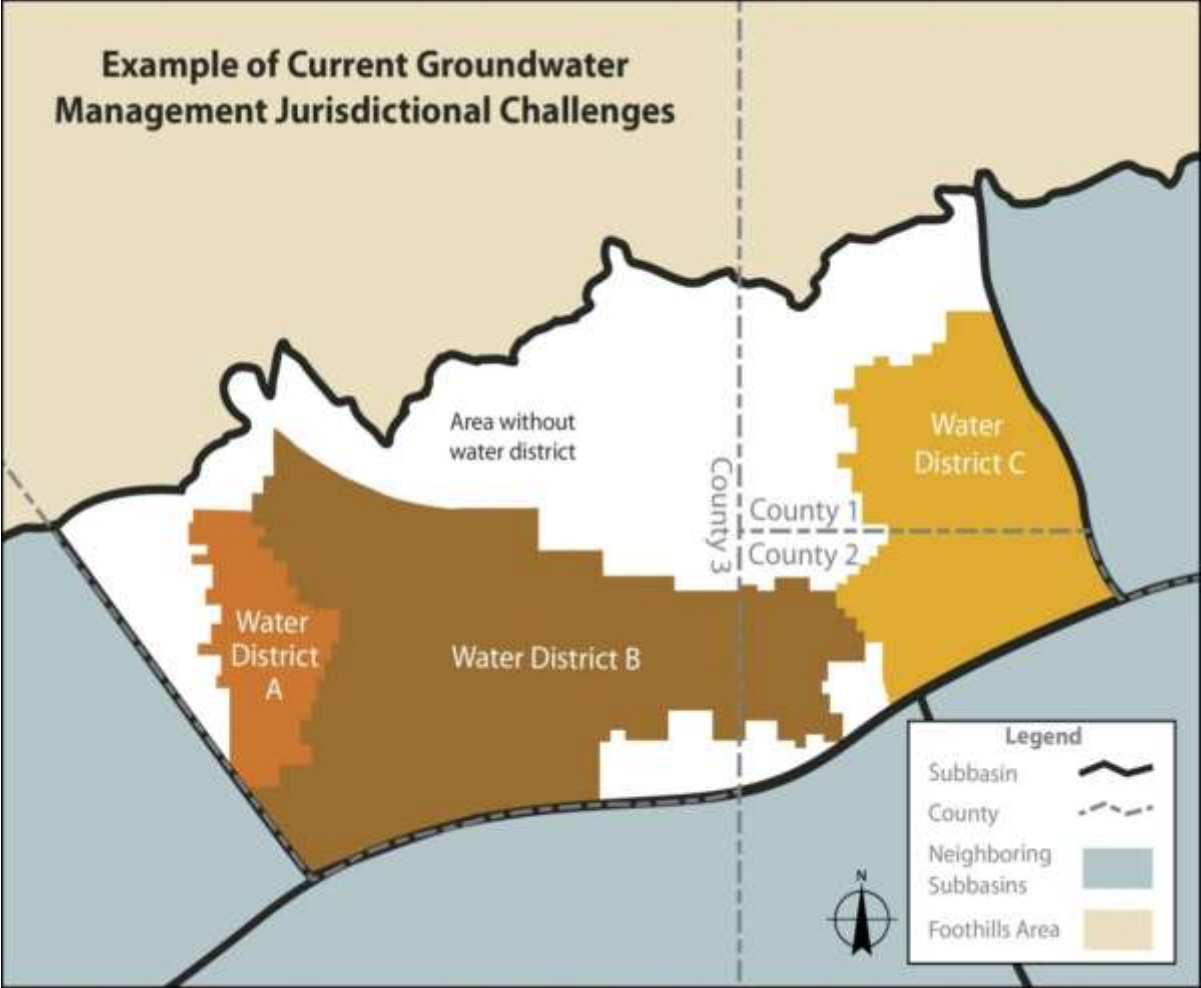




## 2. Identify & Work with Local Agencies



# 2. Identify & Work with Local Agencies



### 3. Understand the Basin

- Collect and share basin information
- Existing plans, models, monitoring data, etc.
- Identify key hydrogeological issues in the basin
- Local, state, academic resources & expertise
- Should alternative process be pursued?



## Potential Issues in Your Basin



- Declining elevations
- Subsidence and infrastructure impact
- Seawater intrusion
- Impacts to surface water systems
- Contaminant plumes
- Increased drilling/pumping costs
- Shallow wells threatened

## 4. Engage Interested Parties

- How will interested parties participate?
  - GSA formation, plan development & implementation
- Identify and maintain list of interested parties
- What existing advisory groups can be used?
- What level of engagement?
  - Inform
  - Consult
  - Collaborate



## 5. Evaluate tasks and local interest

- Form follows Function
- Range of authorities & tasks
  - Coordination
    - Public outreach & stakeholder engagement
    - Planning (GSP)
      - Monitoring and Reporting
      - Implementation
      - Enforcement
- Assess existing local agency interest

## 6. Evaluate Governance Models

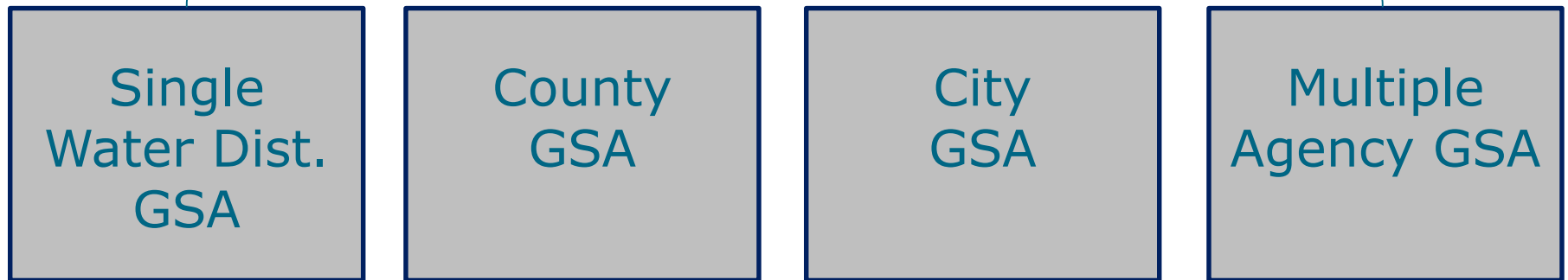
- Centralized GSA
- Distributed GSAs
- Combination

### Single GSA

- Covers entire basin
- Assumes all authorities and responsibilities
- New or existing agency
- Board can include existing agencies/interests
- Likely legal structure– JPA, Special District, County, Water District

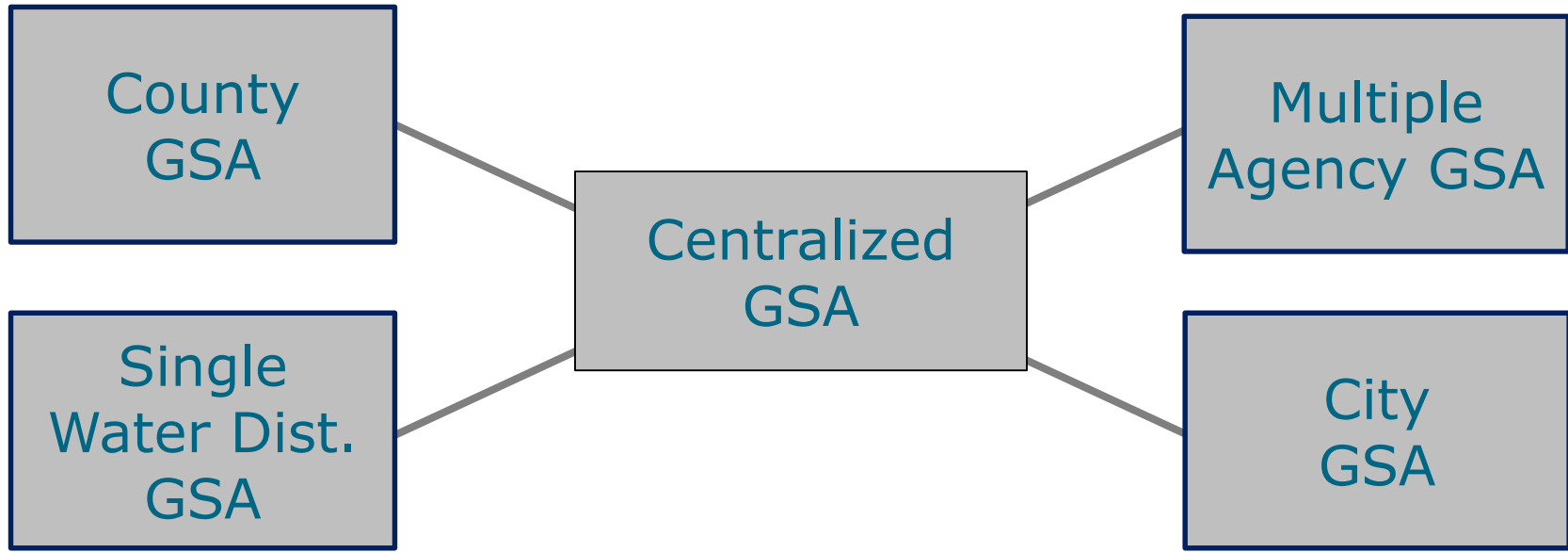


### Coordination Agreement/MOU



- Each GSA assumes all responsibilities for its service area
- Coordination Agreement required if multiple GSPs
- MOU/agreement can support coordination of tasks
- Likely legal structures -new or existing agency:
  - County, City, Water District, JPA, Special Dist.

## Combination GSA



- Centralized GSA: assumes some shared responsibilities
- Multiple GSAs: assume remaining responsibilities
- Likely legal structures, new or existing:
  - County, City, Water District, JPA, Special Dist.

## Next Steps for GSA

- Initiate dialogue with other local agencies
- Engage interested parties
- Gather information about the basin
- Consider third party facilitator
- Learn from others!

