
Marin Health and Human Services

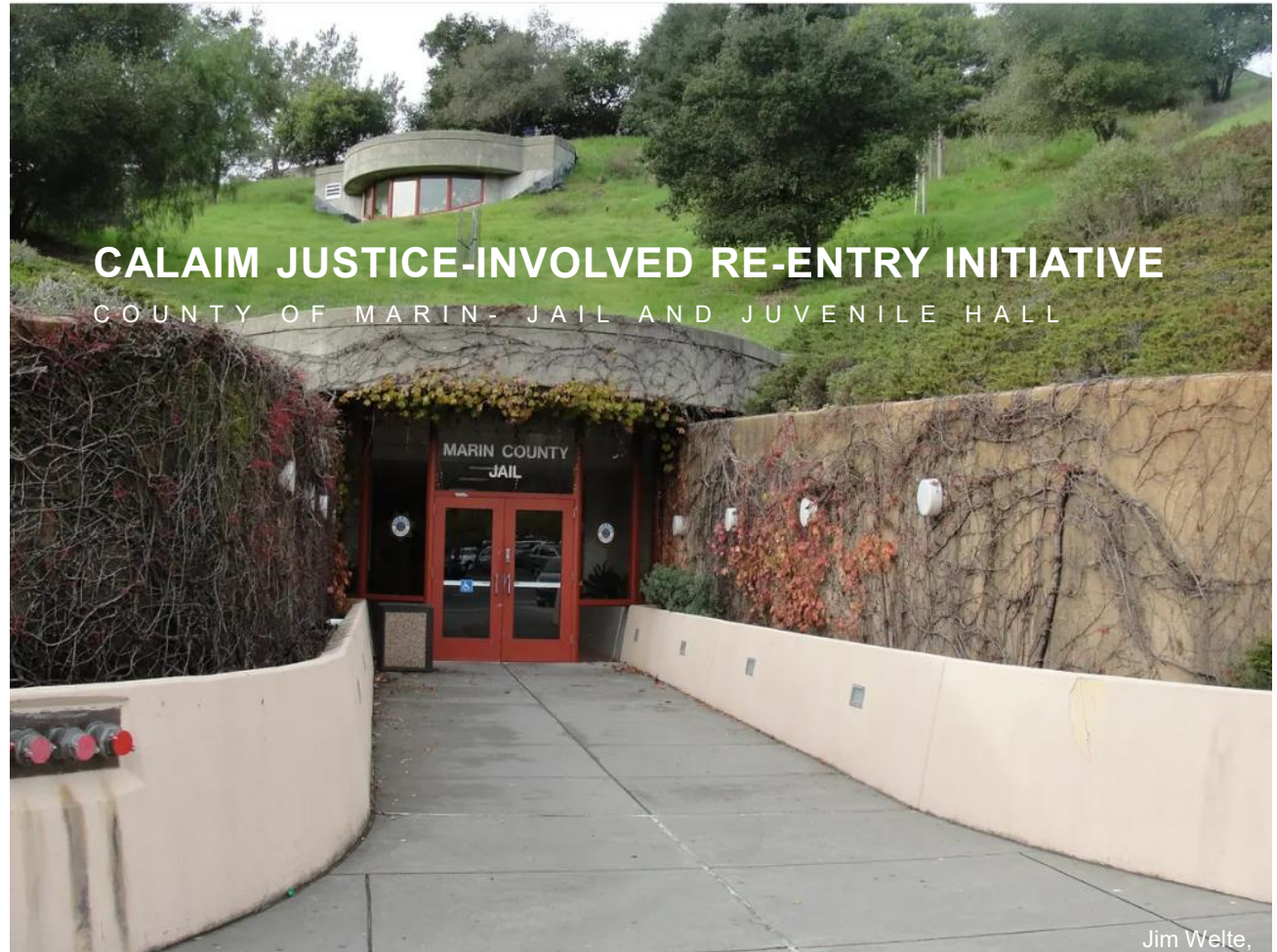
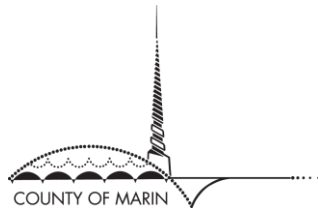
Marin Probation

Marin Sheriff

<https://www.marincounty.gov/>

Email:
HealthOfficer@marincounty.gov

12.02.2025



Jim Welte,

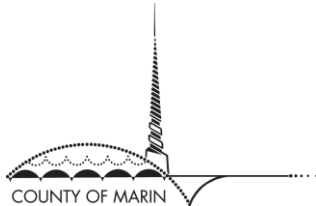
Marin Health and Human
Services

Marin Probation

Marin Sheriff

<https://www.marincounty.gov/>

Slide 2



JUSTICE-INVOLVED RE-ENTRY INITIATIVE

M A N D A T E S

- **Pre-Release Medi-Cal Application Process** - Mandates that all jails and juvenile facilities have a process to assist inmates with the Medi-Cal application process before release
 - **90 days In-Reach** - Initial Care Needs Assessment; Transition plan for community-based care; Screening and Referrals (post-release); Medication Management Plan; **30 days supply of medication and DME upon release**
 - **Covered Pre-Release Services** - Re-entry case management; Physical and Behavioral Health diagnosis and treatment; Lab and radiology services; Medications and medication administration; Medication for Addition Treatment (MAT)
 - **Behavioral Health Facilitated Referral and Linkage** - facilitated referral and linkage” to county behavioral health upon release
-

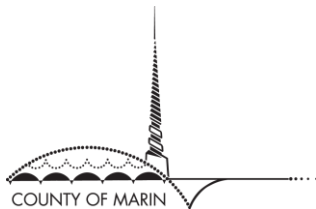
Marin Health and Human
Services

Marin Probation

Marin Sheriff

<https://www.marincounty.gov/>

Slide 3



MULTI-YEAR CROSS-DEPARTMENTAL INITIATIVE

CALIFORNIA ADVANCING AND INNOVATING MEDICAL

Opportunities

- Improved care continuity during re-entry and reduce recidivism
- Shared data, care pathways, and streamlined workflows that strengthen Whole Person Care, reduce duplication, and improve access
- Joint governance that supports implementation

Challenges

- Limited data-sharing capacity and privacy barriers
- Different departmental mandates, priorities, and cultures
- Complex workflows bridging custody, supervisorial, clinical and community settings



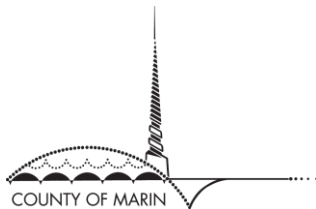
Marin Health and Human
Services

Marin Probation

Marin Sheriff

<https://www.marincounty.gov/>

Slide 4



FUNDING MODEL

BRAIDING AND BLENDING

- PATH Justice-Involved Capacity Building Program (4 rounds of funding)
 - Collaborative Planning and Infrastructure
- AB 109
 - Funding expanded staffing model and community continuum of care
- Medi-Cal Revenue
- County General Fund
- Opioid Settlement Funds

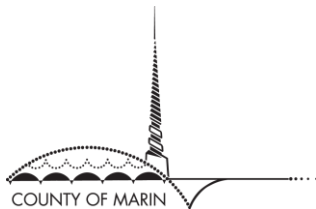
Marin Health and Human
Services

Marin Probation

Marin Sheriff

<https://www.marincounty.gov/>

Slide 5



PROPOSITION 47

FUND MENTAL HEALTH SERVICES, SUBSTANCE USE
DISORDER TREATMENT, AND DIVERSION PROGRAMS

- Led by the Marin County Sheriff's Office in partnership with Center Point, Inc. Additional partners include the District Attorney's Office, Public Defender's Office, and Probation Department.
- Funding: Supported by a \$6.1M Proposition 47 grant awarded in 2024.
- Services Provided:
 - Daily Services Center: Substance use and mental health treatment; CBT groups; vocational and employment preparation; conflict-resolution programming.
 - Supportive Housing: Eight dedicated recovery-residence beds with on-site support.
 - Case Management: Recovery coaches, counselors, and peer specialists providing coordinated, client-centered support.

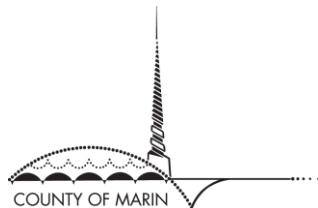
Marin Health and Human
Services

Marin Probation

Marin Sheriff

<https://www.marincounty.gov/>

Slide 6



OPIOID SETTLEMENT FUNDS

MORE INFORMATION: [ODFREEMARIN.ORG/OSF](https://odfreemarin.org/osf)

- **Community-informed and transparent** allocation process
- Managed by **Marin County HHS**; majority invested in **community-based providers**
- Top needs identified:
 - Youth prevention & education
 - Outreach to overdose survivors
 - Expanded naloxone distribution
 - Improved overdose & suicide prevention coordination
 - Increased crisis response & treatment access
- Aligned with [California's Core Abatement Strategies](#)



Photo Credit: Jeff Wong

Marin Health and Human Services

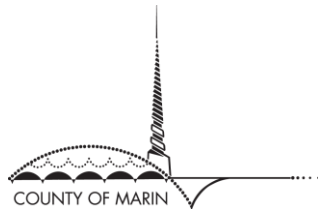
Marin Probation

Marin Sheriff

<https://www.marincounty.gov/>

Email:
HealthOfficer@marincounty.gov

12.02.2025



THANK YOU



Photo Credit: Jeff Wong