

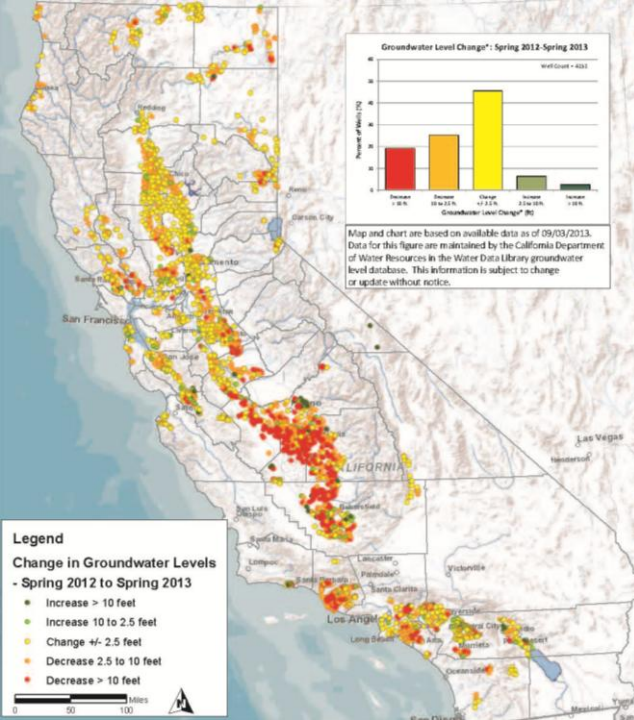
# The Sustainable Groundwater Management Act

## DWR's Sustainable Groundwater Management Program Implementation Progress Report

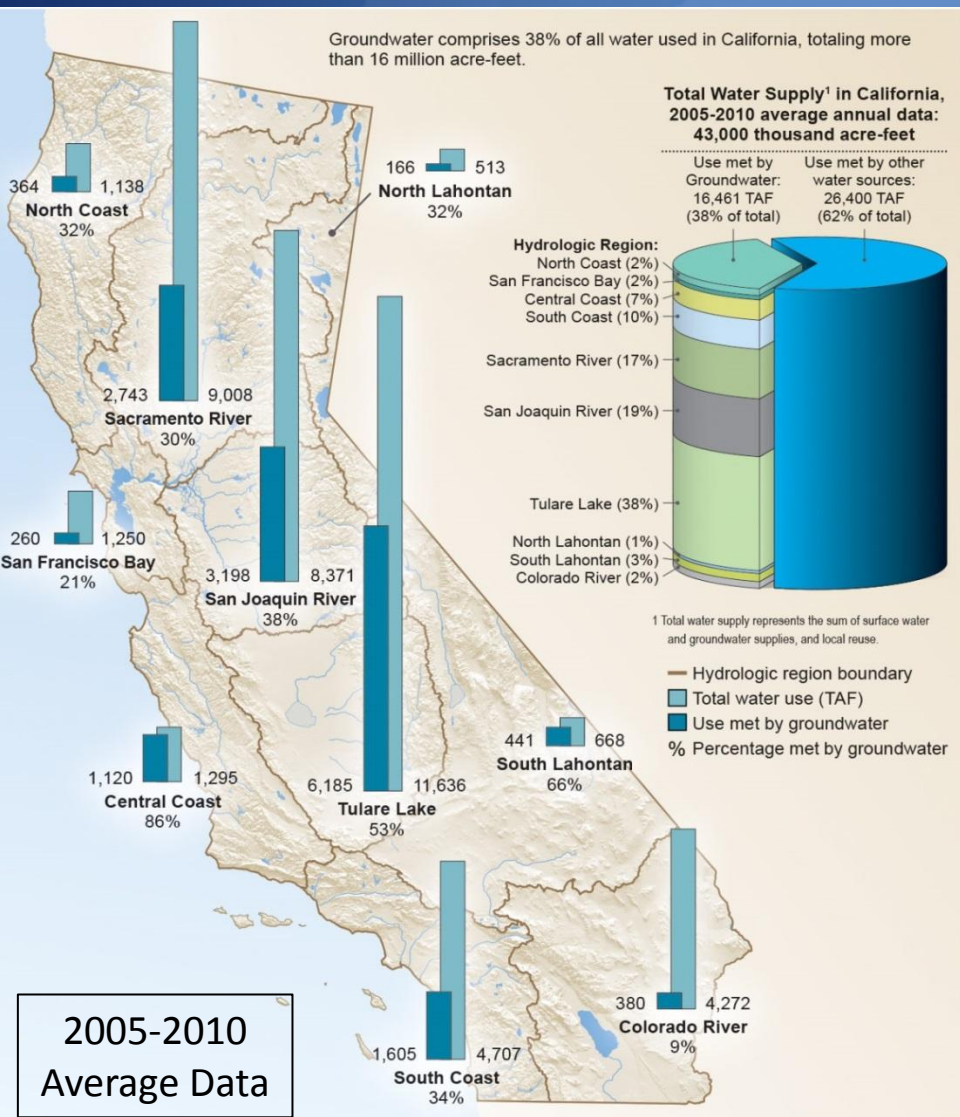
CSAC Agriculture, Environmental and Natural Resources Policy Committee  
November 29, 2016

David Gutierrez

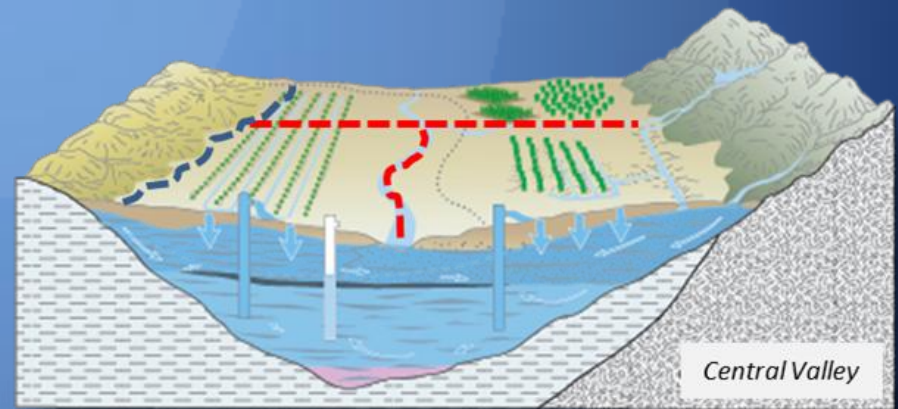
CA Department of Water Resources

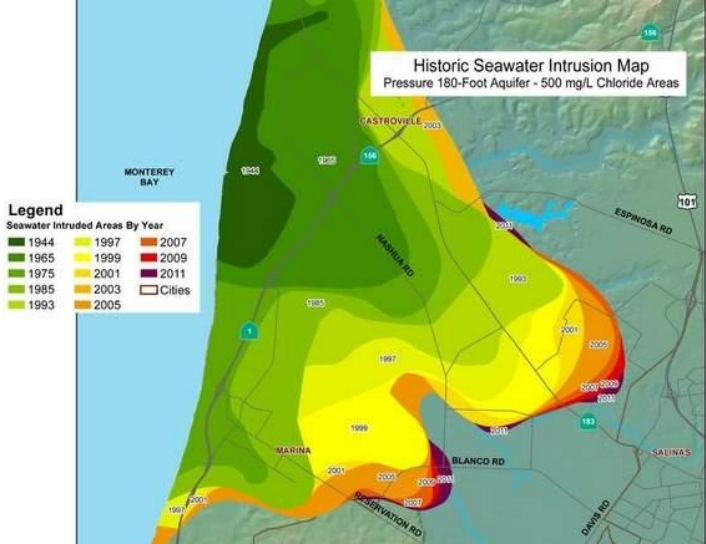


# What is Groundwater and why is it important?



- 38% of total water supply (statewide average)
- 60% during drought years
- Many communities are 100% reliant upon GW

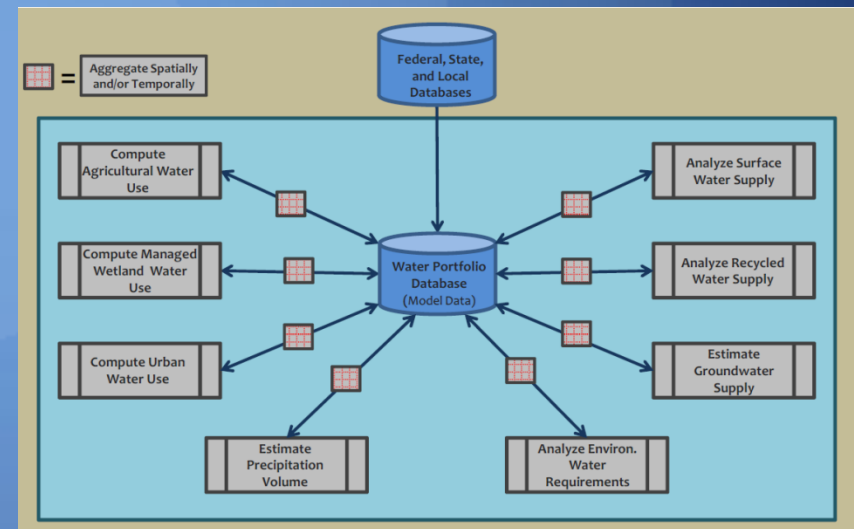




# Adverse Impacts



# California Water Action Plan & Water Balance



# *Sustainable Groundwater Management Act of 2014*



## Framework

- Applicability
- Definitions

## Local's Role

- Establish GSA
- Powers & Authorities
- Sustainability Plans
- Deadlines

## State's Role

- Develop guidance or rules
- Provide Technical and Planning Assistance
- State Evaluation and Assessment
- State Intervention

# DWR's Sustainable Groundwater Management Program

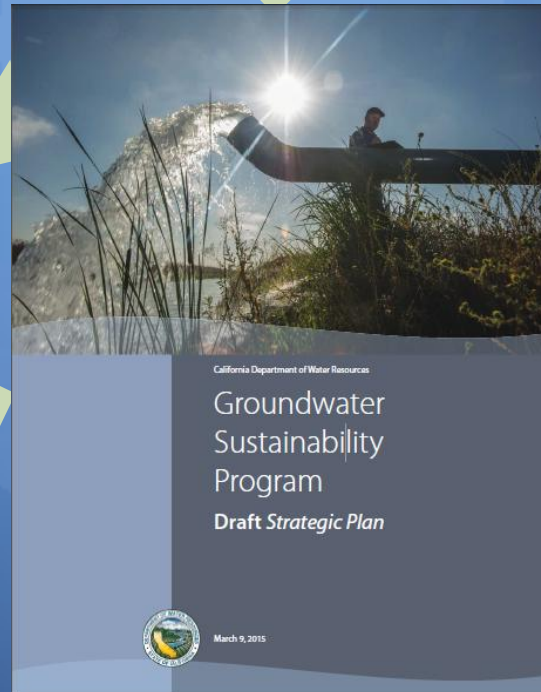
**Provide  
Statewide  
Planning  
Assistance**

**Provide  
Statewide  
Technical  
Assistance**

**Assist State and  
GSA Alignment  
and provide  
Financial  
Assistance**

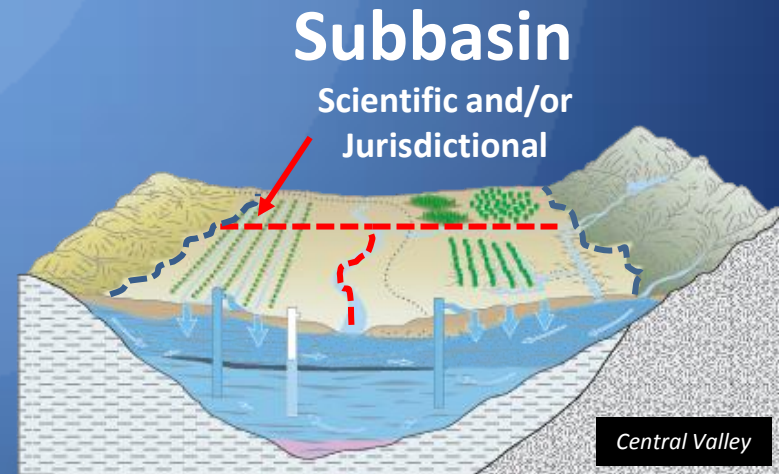
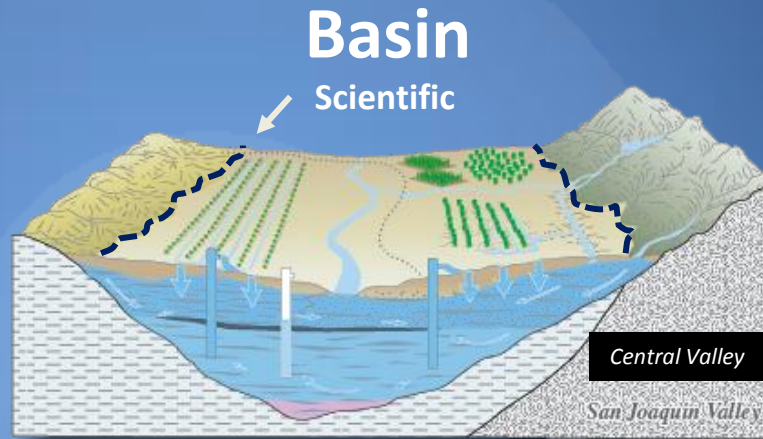
**Develop a  
Framework for  
Sustainable  
Groundwater  
Management**

**Provide  
Interregional  
Assistance**



# Applicability

➤ 515 Groundwater Basins and Subbasins



# SGMA Milestones for Success

## Groundwater Sustainability Agencies

- Formation by June 30, 2017
- Only local agencies can be GSAs

## Groundwater Sustainability Plans

- January 31, 2020 for critically overdrafted basins
- January 31, 2022 for all other high and medium priority basins
- Multiple GSPs in a basin must coordinate

## Groundwater Sustainability

- 20-year implementation period
- 50-year planning horizon

## GSA Interactive Map

This interactive map shows the location of local agencies that have elected to become Groundwater Sustainability Agencies (GSAs). The boundaries of the GSAs are based on information submitted to DWR by those local agencies. While DWR makes every effort to provide accurate information, DWR has not reviewed the GSA boundary information contained in this map and makes no warranties as to the suitability of this map for any particular purpose. Where multiple local agencies have claimed the same portion of a groundwater basin, the areas of overlap are indicated by a darker color within the GSA boundaries.

In addition to GSA boundaries, the interactive map application shows the following: (1) Bulletin 118-2003 groundwater basins; (2) CASGEM basin prioritization; (3) adjudicated areas listed in Water Code § 10720.8 (full list available soon); and (4) local agencies listed in Water Code § 10723(c) (available soon).

If you have questions related to GSAs or have comments related to the interactive map please contact Mark Nordberg at [Mark.Nordberg@water.ca.gov](mailto:Mark.Nordberg@water.ca.gov). The GSA Interactive Map was last updated on August 10th, 2015.



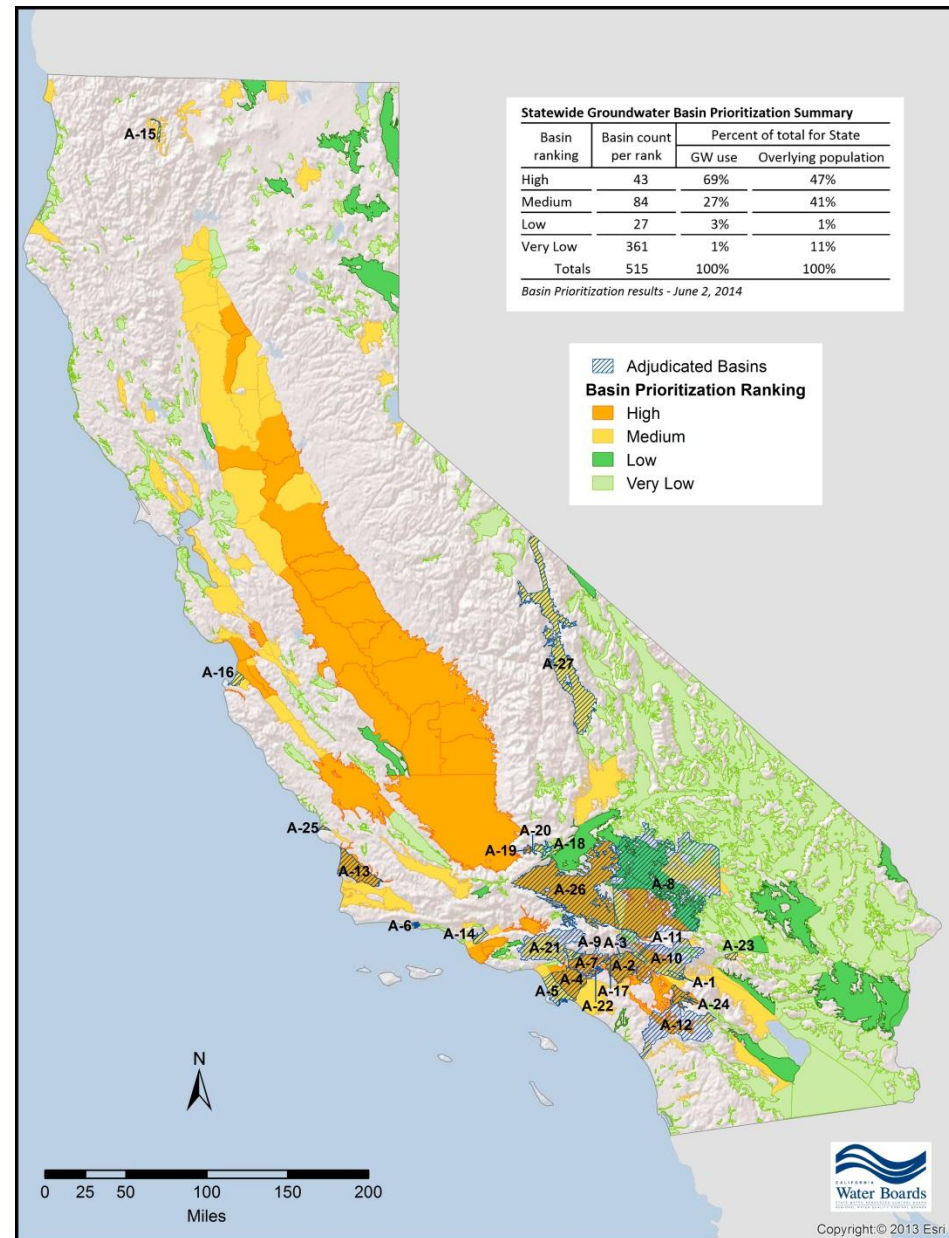


# DWR's Near Term SGMA Responsibilities/Due Dates

- ✓ **Initial Basin Prioritization: §10723.4**
    - Completed by January 31, 2015
  - ✓ **Regulations for Modifying Groundwater Basin Boundaries: §10722.2**
    - Completed by January 1, 2016
  - ✓ **Identification of Critically Overdrafted Basins: §12924**
    - Completed January 2016, Updated October 2016
  - ✓ **Groundwater Sustainability Plan and Alternatives Regulations: §10733.2**
    - Completed May 18, 2016
  - ✓ **Modifying Groundwater Basin Boundaries (Round 1)**
    - Completed October 11, 2016
- |   |  |
|---|--|
| <ul style="list-style-type: none"><li>• <b>Water Available for Replenishment: §10729(c)</b><ul style="list-style-type: none"><li>– Due December 31, 2016</li></ul></li><li>• <b>Best Management Practices: §10729(d)</b><ul style="list-style-type: none"><li>– Due January 1, 2017</li></ul></li><li>• <b>Bulletin 118: §12924</b><ul style="list-style-type: none"><li>– Interim Update due January 2017;</li><li>– Comprehensive Update due 2020</li></ul></li></ul> | <ul style="list-style-type: none"><li>• <b>Revised Basin Prioritization</b><ul style="list-style-type: none"><li>– Estimated mid 2017</li></ul></li><li>• <b>Alternatives Reviews</b><ul style="list-style-type: none"><li>– Begins January 1, 2017</li></ul></li><li>• <b>Groundwater Sustainability Agency Formation: §10723</b><ul style="list-style-type: none"><li>– Due by June 30, 2017</li></ul></li></ul> |
|---|--|

# Basin Prioritization

- Requires GW sustainability plans in high- and medium-priority basins
- Adjudicated basin supply information



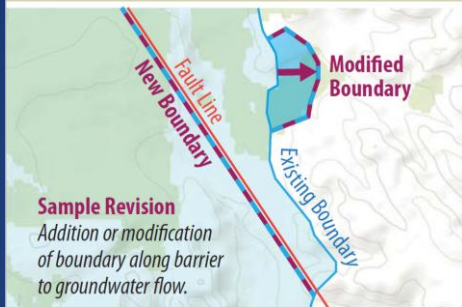
# Basin Boundary Modifications

## Article 3

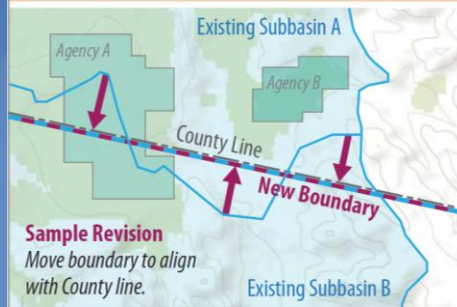
### Scientific

### Jurisdictional

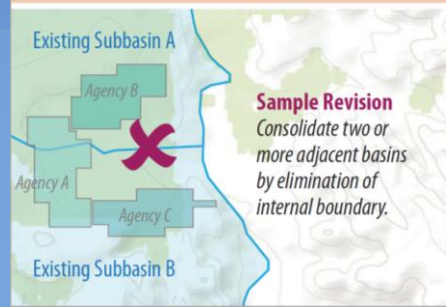
#### Scientific



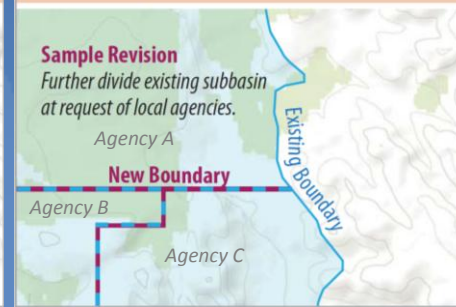
#### Internal (Jurisdictional)



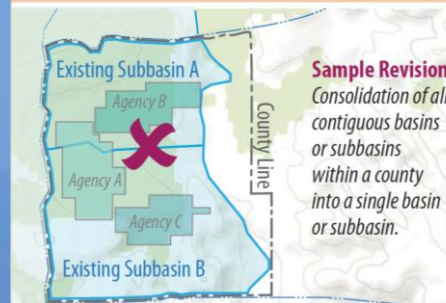
#### Consolidation (Jurisdictional)



#### Subdivision (Jurisdictional)



#### County Consolidation (Jurisdictional)



# Basins Subject to Critical Overdraft

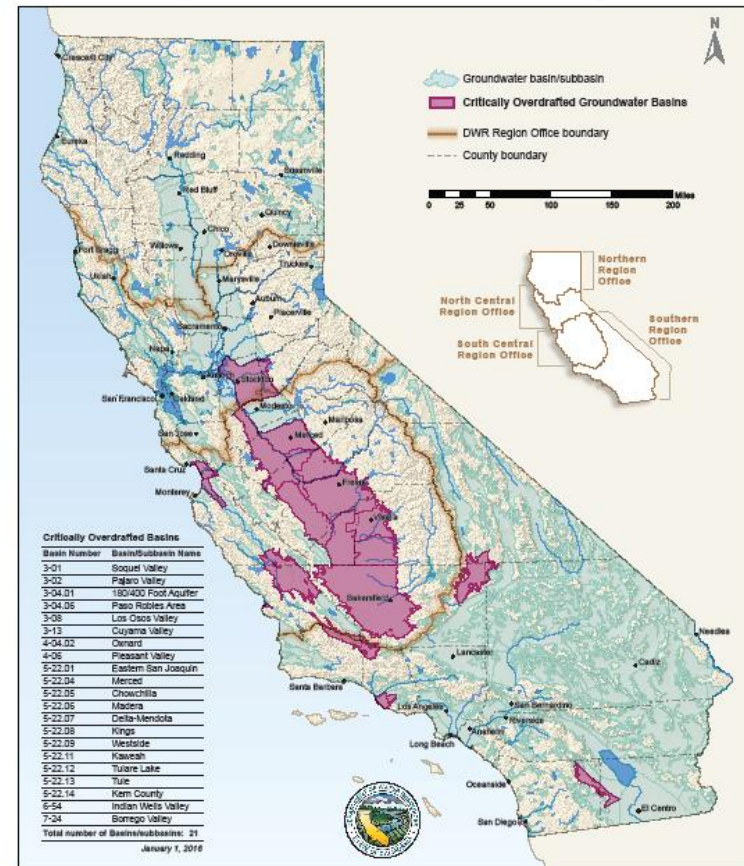
## Identify Basins Subject to Critical Conditions of Overdraft

Draft Completed July 2015

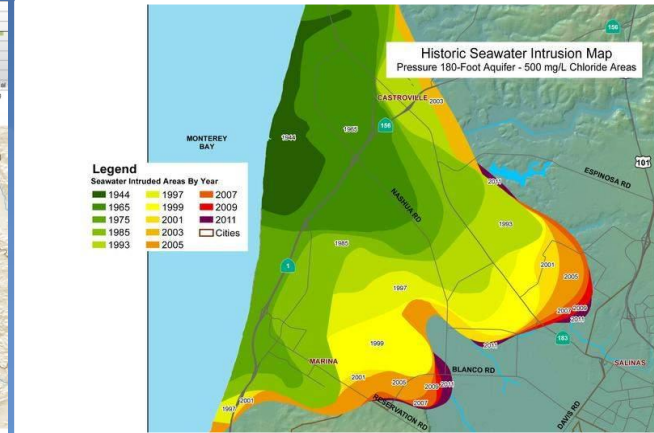
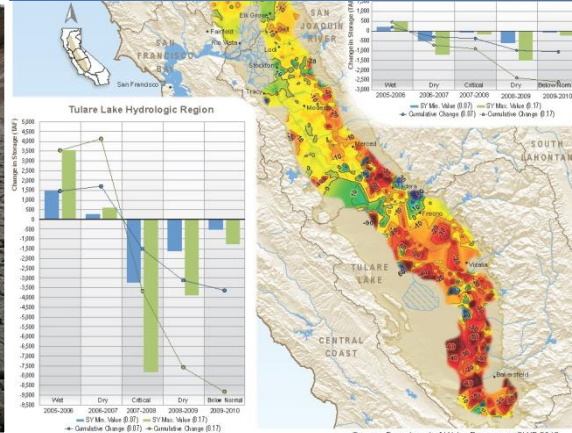
Public Comments September 1015

Completed January 2016

Critically Overdrafted Groundwater Basins – January 2016



# GSPs and Undesirable Results



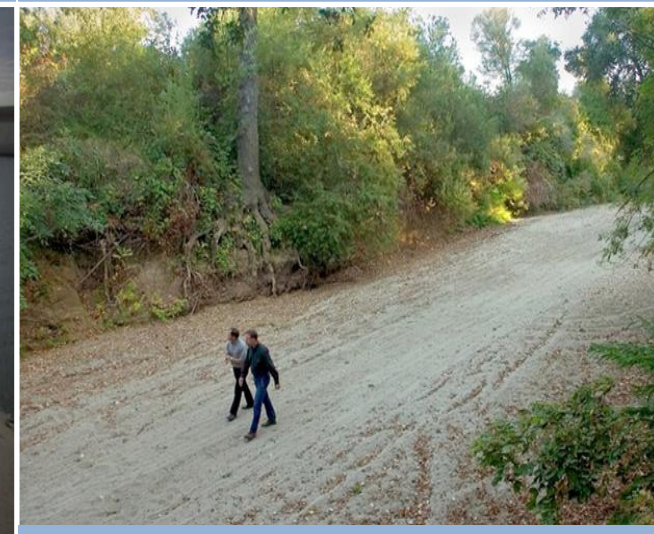
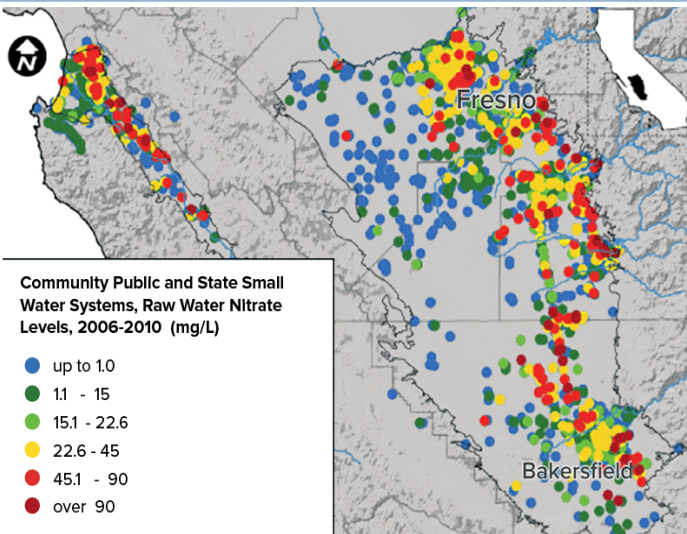
Lowering of GW Levels



Reduction of GW Storage



Seawater Intrusion



Water Quality Degradation



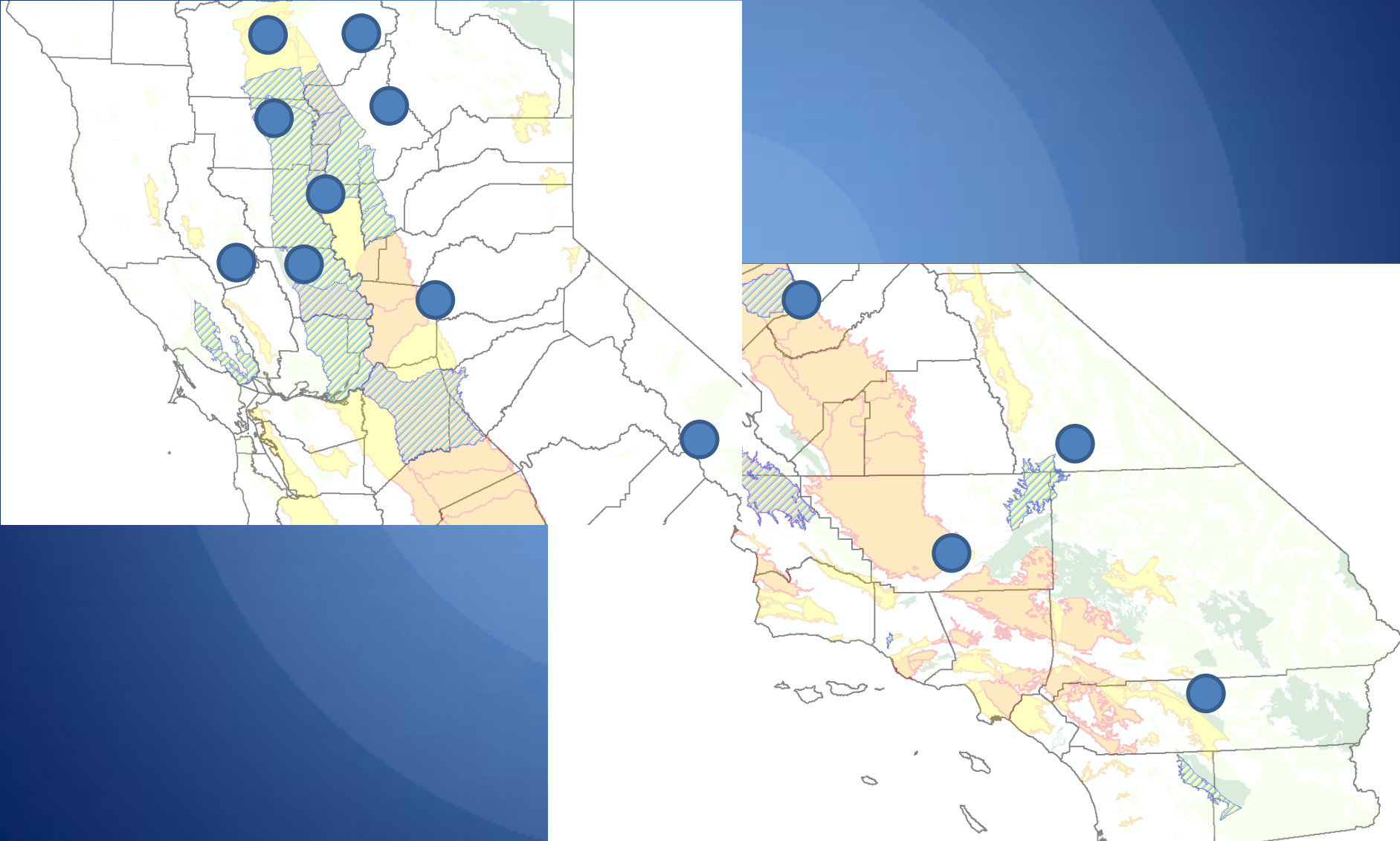
Land Subsidence



Depletion of Interconnected Streams

Assistance to Locals

# Facilitation Support Service

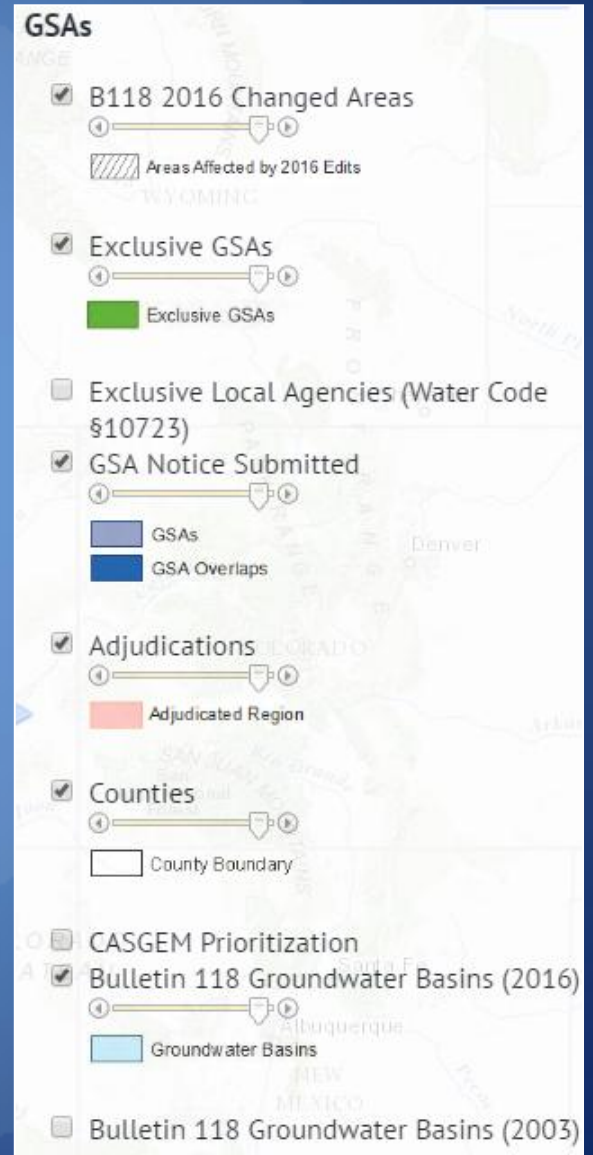
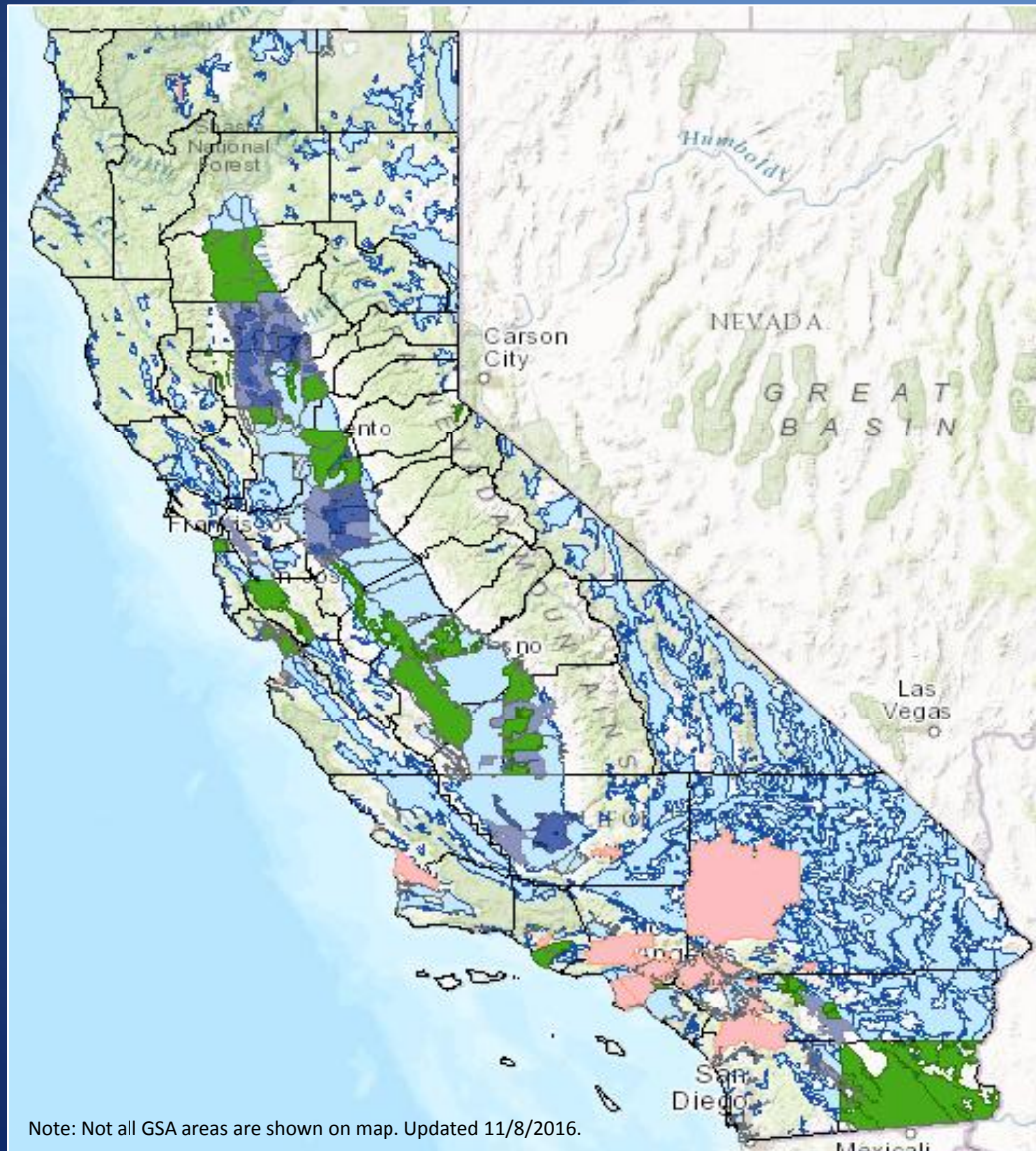


# DWR's Near Term SGMA Responsibilities/Due Dates

- ✓ **Initial Basin Prioritization: §10723.4**
    - Completed by January 31, 2015
  - ✓ **Regulations for Modifying Groundwater Basin Boundaries: §10722.2**
    - Completed by January 1, 2016
  - ✓ **Identification of Critically Overdrafted Basins: §12924**
    - Completed January 2016, Updated October 2016
  - ✓ **Groundwater Sustainability Plan and Alternatives Regulations: §10733.2**
    - Completed May 18, 2016
  - ✓ **Modifying Groundwater Basin Boundaries (Round 1)**
    - Completed October 11, 2016
- |   |  |
|---|--|
| <ul style="list-style-type: none"><li>• <b>Water Available for Replenishment: §10729(c)</b><ul style="list-style-type: none"><li>– Due December 31, 2016</li></ul></li><li>• <b>Best Management Practices: §10729(d)</b><ul style="list-style-type: none"><li>– Due January 1, 2017</li></ul></li><li>• <b>Bulletin 118: §12924</b><ul style="list-style-type: none"><li>– Interim Update due January 2017;</li><li>– Comprehensive Update due 2020</li></ul></li></ul> | <ul style="list-style-type: none"><li>• <b>Revised Basin Prioritization</b><ul style="list-style-type: none"><li>– Estimated mid 2017</li></ul></li><li>• <b>Alternatives Reviews</b><ul style="list-style-type: none"><li>– Begins January 1, 2017</li></ul></li><li>• <b>Groundwater Sustainability Agency Formation: §10723</b><ul style="list-style-type: none"><li>– Due by June 30, 2017</li></ul></li></ul> |
|---|--|

# Status of GSA Formations

[http://water.ca.gov/groundwater/sgm/gsa\\_map.cfm](http://water.ca.gov/groundwater/sgm/gsa_map.cfm)





# Tentative Draft Release Schedule (Dates and Documents)

## Best Management Practices (BMPs)

Oct 28

- BMP 1: Monitoring Protocols, Standards, and Sites
- BMP 2: Monitoring Networks and Identification of Data Gaps
- BMP 3: Hydrogeologic Conceptual Model
- BMP 4: Water Budget
- BMP 5: Modeling

## Guidance Documents

Oct 28

- Preparation Checklist for GSP Submittal
- GSP Annotated Outline

Mid Dec

- Establishing Sustainable Management Criteria

Early  
Nov

- Engagement with Tribal Governments
- Stakeholder Engagement and Communication

# W.A.F.R. Estimates Concept

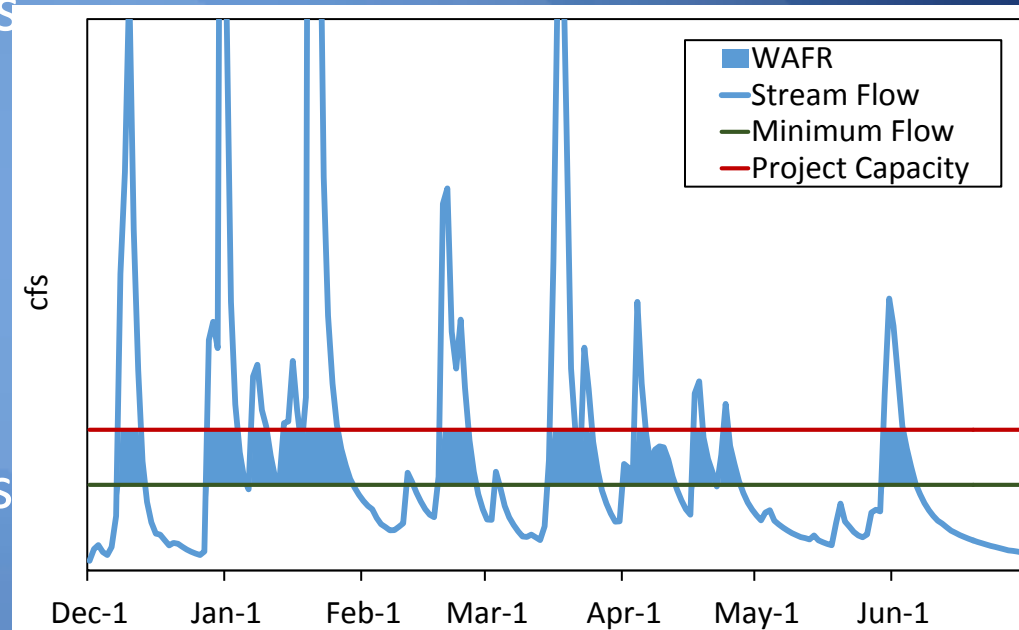
## Simple Hydrograph

### Instream Flow Requirements

- Existing Instream Flow Requirements
- Other Sources

### Diversion Capacity of Project (s)

- Water Rights (eWRIMS)
- Proposed Projects



# Roadmaps for Water Available and for Replenishment, by Method

Step by step roadmap with specific examples for:

- Surface Water
- Conservation
- Recycling
- Desalination
- Water Transfers



➤ In-Lieu

➤ Active Recharge

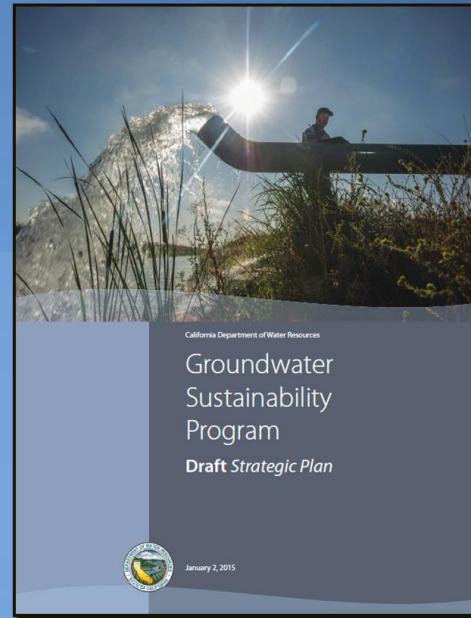
# Success Factors

- **GSA formation**
- **Data gaps, acquisition and management**
- **Fact and Fiction** – Communication and Outreach
- **Support and Assistance**
- **Overall Implementation and Decisions** –  
Balancing supply and demand

# Questions

*When properly managed, groundwater resources will help protect communities, farms, and the environment against the impacts of prolonged dry periods and climate change.*

California Water Action Plan 2014



State: <http://groundwater.ca.gov>

DWR: <http://www.water.ca.gov/groundwater/>

SWRCB: [http://www.waterboards.ca.gov/water\\_issues/programs/gmp/](http://www.waterboards.ca.gov/water_issues/programs/gmp/)

